

INFORMATION MEMORANDUM

14 MARTIN PL



PROUDLY PREPARED BY
CUSHMAN & WAKEFIELD / COLLIERS

HERITAGE

14 Martin Place, formerly known as the Colonial Mutual Life Building, was built in 1892. Designed by renowned Sydney architect John Kirkpatrick, the eight-level sandstone façade is a testament to Martin Place’s cultural and commercial legacy.

The tower addition, completed around 1970, was one of Sydney’s first notable examples of adaptive reuse, blending late-Victorian Gothic Revival with modern commercial design. With a new ground-floor retail offering underway, 14 Martin Place continues to evolve — honouring its history while looking to the future.



Pictured Left:
14 Martin Place illustration

Pictured Right:
Martin Place, c1900

Images Source:
City of Sydney Archives



WELCOME

OVERVIEW

LOCATION

THE BUILDING

CONTACT





01

OVERVIEW



WELCOME

OVERVIEW

LOCATION

THE BUILDING

CONTACT



INTRODUCTION

14 Martin Place presents a rare opportunity to secure a prestigious address that fuses heritage architecture with modern interiors.

Behind a striking façade lies a contemporary, light-filled office tower. A stunning lobby features sleek, elegant lines and warm materials, creating an immediate feeling of welcome.

Centrally situated at the corner of Martin Place and Pitt Street, the building places tenants at the centre of Sydney's premier business, retail and dining precincts. Its corner position affords the workspaces abundant natural light and sweeping city views, providing an inspiring setting for focus and collaboration.

[VIEW WEBSITE](#) →

11,500sqm

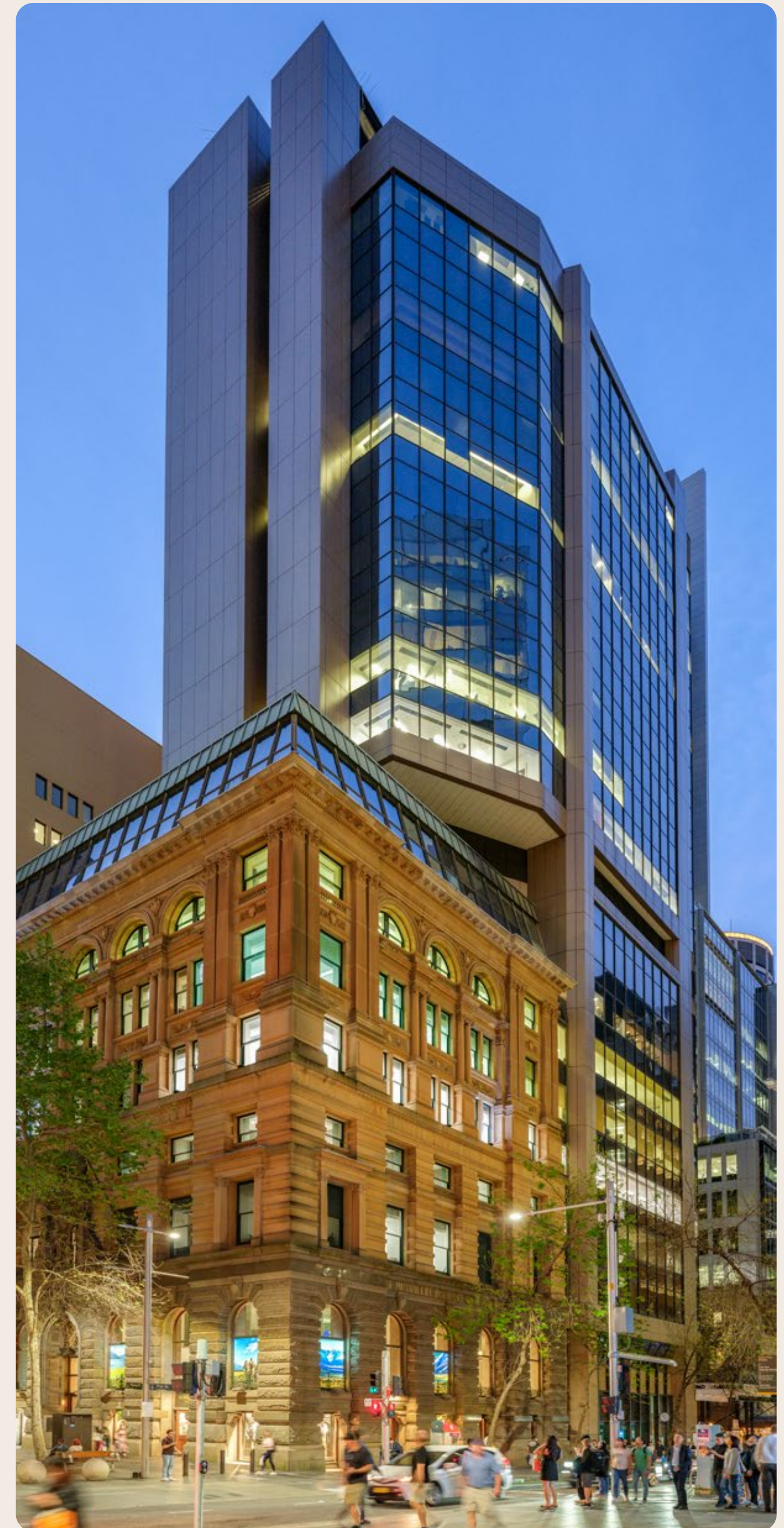
Lettable area of commercial office space

19

Levels of light-filled offices

4.5

Strong NABERS Energy rating



WELCOME

OVERVIEW

LOCATION

THE BUILDING

CONTACT





L1-8

L10-19

WELCOME

OVERVIEW

LOCATION

THE BUILDING

CONTACT



02

LOCATION



PERFECTLY POSITIONED



14 MARTIN PLACE

- ◆ Rodd & Gunn
- ◆ A.Lange & Sohne
- ◆ Grandfathers
- ◆ Salad Days
- ◆ Vapiano

FOOD & BEVERAGE

- 1 Angel Hotel
- 2 Bopp & Tone
- 3 Botswana Butchery
- 4 Centro 86
- 5 David Jones Foodhall
- 6 Fix Wine Bar + Restaurant
- 7 Felix
- 8 The Gidley
- 9 Gowings Bar & Grill
- 10 The Ivy Precinct
- 11 Marble Bar
- 12 Metro St James
- 13 Mr Wong
- 14 MLC Foodcourt
- 15 Palmer & Co
- 16 The Caterpillar Club
- 17 The St James
- 18 Verandah Bar
- 19 Westfield Sydney Dining

RETAIL

- 20 Pitt Street Mall
- 21 Queen Victoria Building
- 22 The Strand Arcade
- 23 Westfield Sydney

ENTERTAINMENT & CULTURE

- 24 City Recital Hall
- 25 Museum of Sydney
- 26 State Theatre
- 27 Sydney Tower
- 28 Theatre Royal Sydney

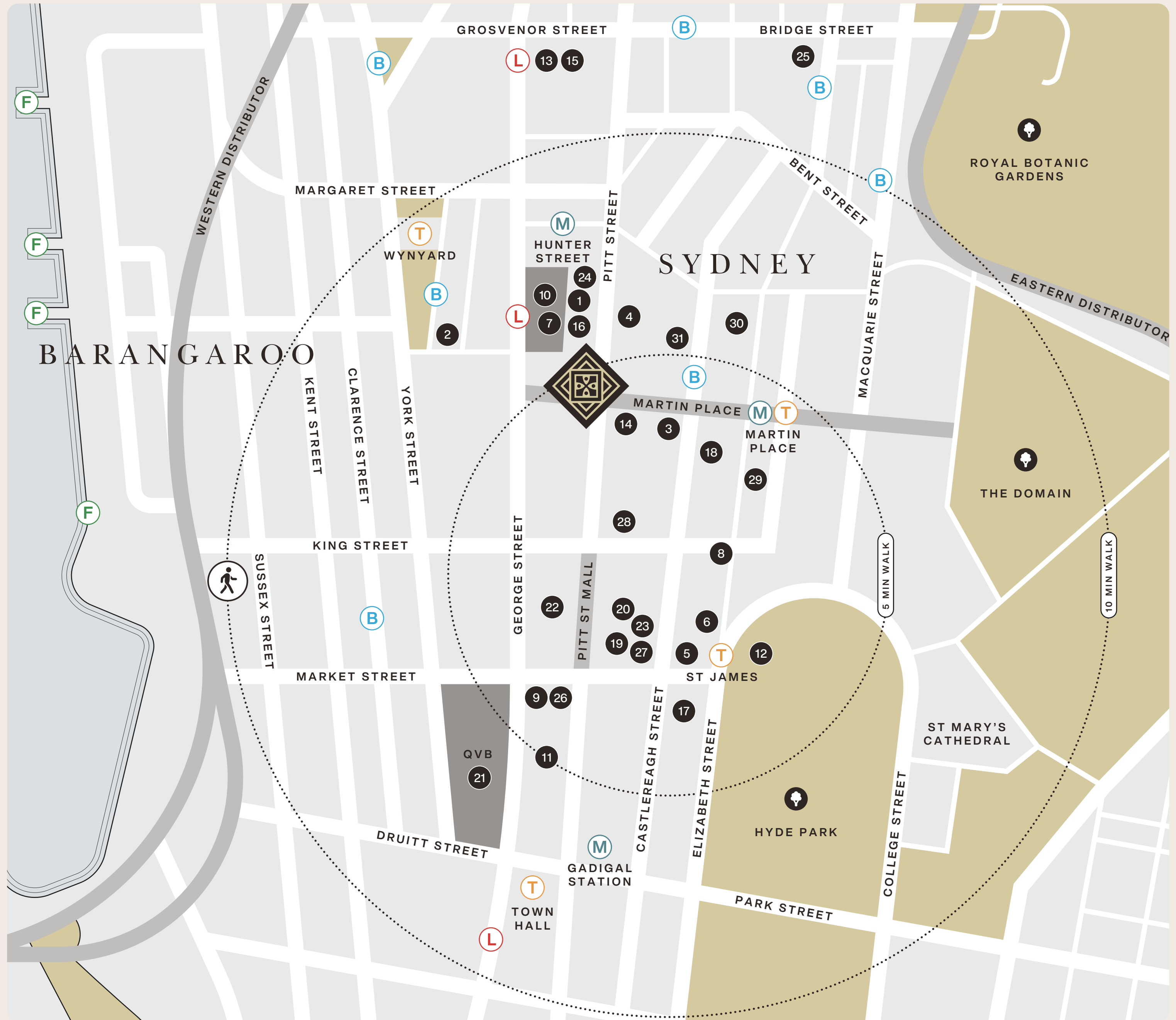
WELLNESS

- 29 Anytime Fitness
- 30 Barry's
- 31 Conditn.

TRANSPORT

- T Train Station
- M Metro Station
- L Light Rail Stop
- F Ferry Wharf
- B Bus Stop

A LANDMARK ADDRESS



EXPLORE THE AREA

14 Martin Place is surrounded by flagship retailers, celebrated dining and blue-chip companies. Westfield, the Strand Arcade, David Jones and Myer are all moments away, along with renowned cafés and restaurants including Ivy's Felix and Ash St. Cellar.

Tenants are also within easy walking distance of parks, museums, Sydney Harbour and all forms of public transport. With rail, Metro, bus, light rail and ferry connections close by, and direct access to the Pitt Street cycleway, the building offers seamless connectivity in every direction.



50m

Walking distance to the nearest bus stop

185m

Walking distance to Martin Place Station

200m

Walking distance to the nearest light rail

290m

Walking distance to Wynyard Station

450m

Walking distance to St James Station

695m

Walking distance to Circular Quay



WELCOME

OVERVIEW

LOCATION

THE BUILDING

CONTACT





OUR RETAIL TENANTS

The addition of new eateries within 14 Martin Place and along its adjoining laneway brings everyday convenience and a vibrant atmosphere to the precinct.

Tenants and visitors can enjoy a variety of dining options for a casual meeting, a quick lunch or an after-work meal. The line-up includes Grandfathers (modern Chinese), Vapiano (Italian) and Salad Days, a café and salad bar.



Salad Days

VAPIANO

Grandfathers





WELCOME

OVERVIEW

LOCATION

THE BUILDING

CONTACT



03

THE BUILDING

WELCOME

OVERVIEW

LOCATION

THE BUILDING

CONTACT



SPACES

The interiors are characterised by high ceilings, a light and refined colour palette and natural materials. Spaces available on levels two and four are rich in character and feature heritage windows, spacious reception areas and elegant fit-outs.

A lobby refurbishment was completed in 2019, and new end-of-trip facilities added in 2024 further elevate the tenant experience. With hotel-inspired shower areas, lockers, towel services, and the latest appliances, such as hair-straighteners, this is the perfect place to relax and refresh before the workday begins.

The building also holds a 4.5-star NABERS Energy rating, with recent upgrades focused on comfort, sustainability and performance.

70–877sqm

Premium office space available

2019

Ground-floor lobby refurbishment

2024

EOT facilities refurbishment



WELCOME

OVERVIEW

LOCATION

THE BUILDING

CONTACT





WELCOME

OVERVIEW

LOCATION

THE BUILDING

CONTACT



STACK PLAN

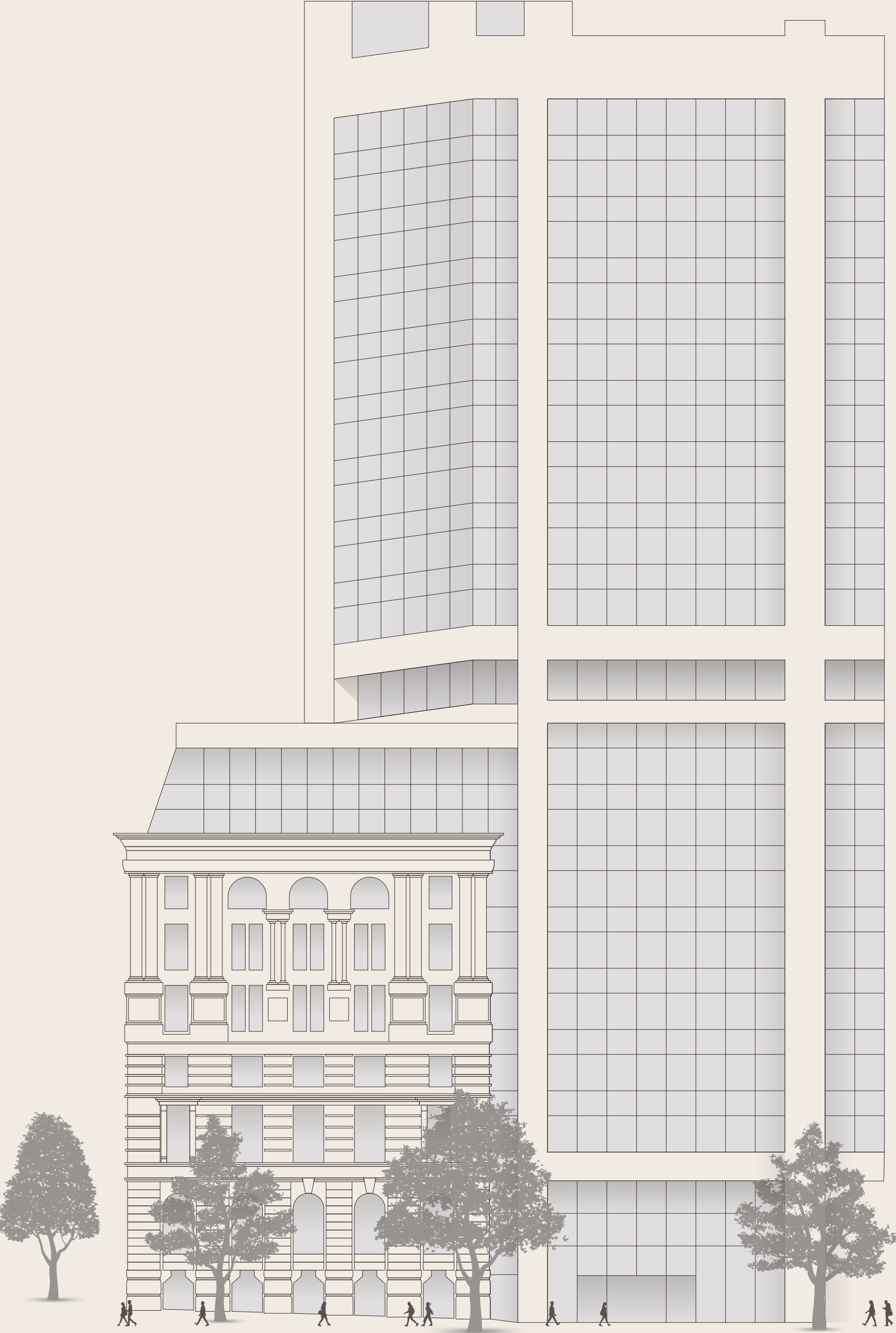
Level 4 features 78 open-plan workstations, a spacious reception area, ample collaboration zones, quiet rooms, and breakout spaces. The office also benefits from a stunning outlook over Martin Place through heritage bay windows.

Level 2 offers 44 sit-stand workstations, along with meeting rooms, quiet spaces, and informal breakout areas. The space features original heritage windows with floor-to-ceiling glass at the rear.

[VIEW AVAILABILITY](#) →

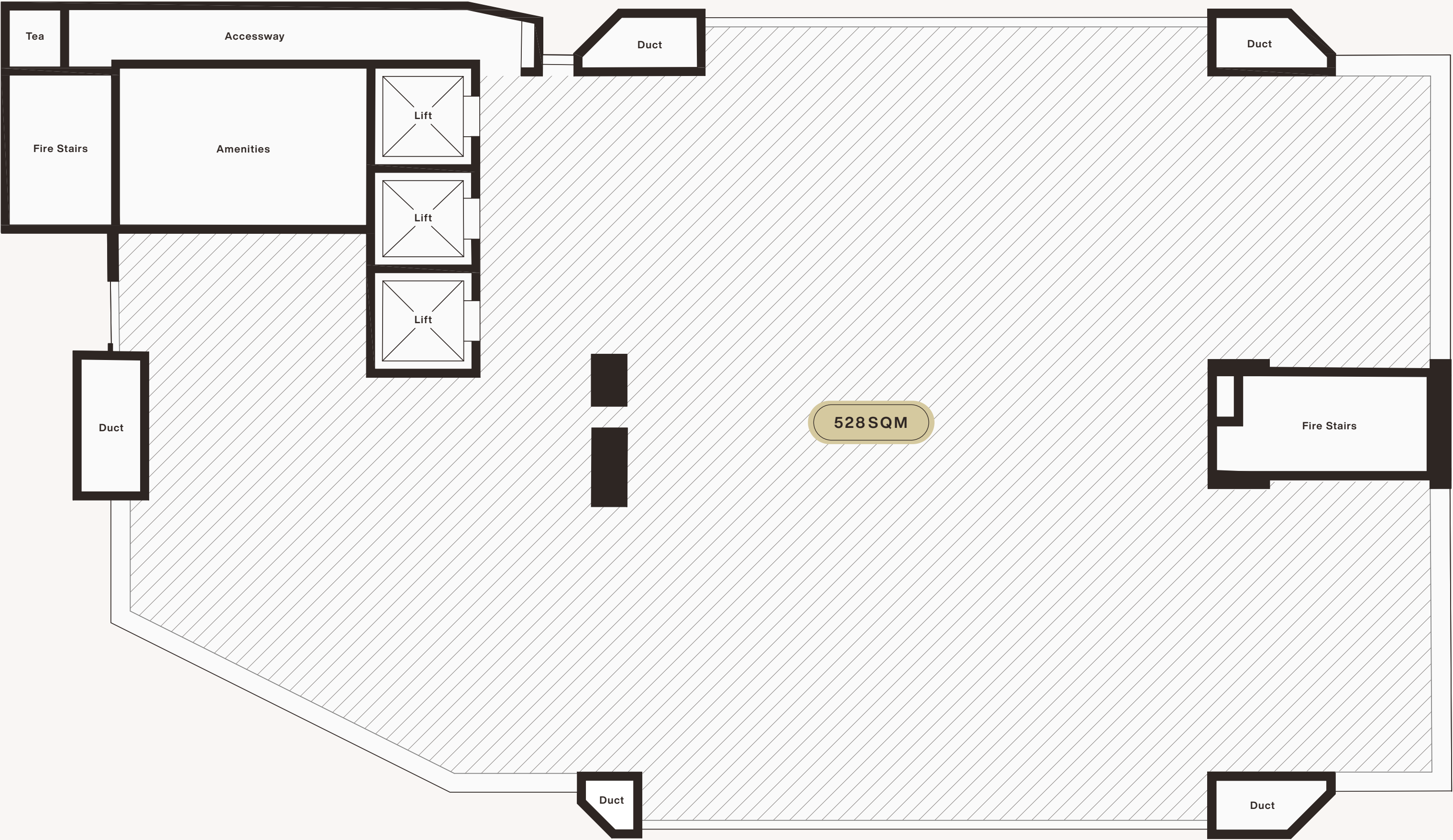
LEVEL	AVAILABILITY (NLA)
19	Leased
18	Leased
17	Leased
16	Leased
15	Available July 2026 Suite 15.02: 185sqm
14	Leased
13	Available July 2026 Suite 13.01: 414sqm
12	Leased
11	Leased
10	Leased
09	Plant
08	Leased
07	Abacus Flex
06	Leased
05	Leased
04	Available Now Suite 4.01: 868sqm
03	Abacus Flex
02	Available Now Suite 2.02: 439sqm
01	Leased
Ground / Retail	Leased
Basement	—

Indicative Only.



MARTIN PLACE

ANGEL PLACE



LEVELS

15





View to the south down Pitt Street



View to the north up Pitt Street

WELCOME

OVERVIEW

LOCATION

THE BUILDING

CONTACT



**SUITE 4.01
PROPOSED FITOUT**

WORKSPACE RATIO

Net Lettable Area	877sqm
Workspace Ratio	1:10 p/sqm

BREAKDOWN

Arrival / Waiting	x1
Boardroom / Training Room (24P)	x1
Boardroom (14P)	x1
Meeting Room (4P)	x4
Meeting Room (6P)	x1
Meeting Room (5P)	x1
Meeting Room (4P)	x1
Phone Booth	x1
Workstations	x77
Kitchen / Breakout	x1
Kitchenette	x1
Utilities / Comms	x1

LEVEL

04

MARTIN PLACE

ANGEL PLACE



PITT STREET



END-OF-TRIP

The new end-of-trip facilities at 14 Martin Place bring a wellness focus into the heart of the building. A sophisticated blend of tile and timber pays homage to the site's heritage but with a contemporary edge.

The spaces are further enhanced by muted lighting that creates a calm and relaxing ambience. Hotel-inspired showers feature marble joinery and premium bathing products, while dedicated bicycle storage supports a healthier daily commute.

290sqm

End-of-trip area

05

Shower rooms

20+

Bicycle storage racks

50

Lockers



WELCOME

OVERVIEW

LOCATION

THE BUILDING

CONTACT





FLEX BY ABACUS

14 Martin Place is home to Flex — a premium, fully-fitted workspace designed for agility and ease. This state-of-the-art offering is powered by cutting-edge technology, allowing tenants to book secure workstations and manage services on demand. Flex also gives access to the wider Abacus Flex network, providing interstate meeting rooms, desks and offices.

Hybrid leasing options provide the freedom to scale, combined with the convenience of a plug-and-play setup. Flex also features generous breakout areas, formal and informal meeting spaces and the flexibility to expand or contract as business needs evolve.

[VIEW FLEX WORKSPACES](#) →



TIMELESS SOPHISTICATION MEETS MODERN FLEXIBILITY

WELCOME

OVERVIEW

LOCATION

THE BUILDING

CONTACT





WELCOME

OVERVIEW

LOCATION

THE BUILDING

CONTACT



A RARE OPPORTUNITY

TIM STANWAY
0421 080 397
tim.stanway@cushwake.com

HARRY WISE
0431 160 613
harry.wise@cushwake.com

TRENT STEPHENS
0412 328 240
trent.stephens@colliers.com

INDIANA GARLICK
0424 194 707
indiana.garlick@colliers.com



14 MARTIN PLACE | ABACUS

[VIEW WEBSITE](#) →

DISCLAIMER

The information about this property (in particular any information about existing facilities and specifications, proposed facilities or design and construction packages, zoning, consent for use, access, amenities, materials and functionalities, area and location) has been provided as a guide only, without warranties of any kind and is subject to change. Prospective tenants should make their own enquiries to satisfy themselves as to the accuracy of the information. Any images show only certain parts of the property as it appeared at the time the images were taken. Areas, measurements and distances given are approximate only. The owners do not make any representation or warranties regarding the use or the result of the use of the property and information in terms of their correctness, accuracy, reliability or otherwise.

WELCOME

OVERVIEW

LOCATION

THE BUILDING

CONTACT

